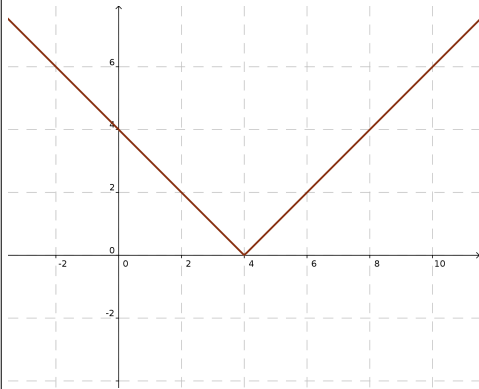


(125) 25°-26° Representa las siguientes funciones y defínelas por intervalos

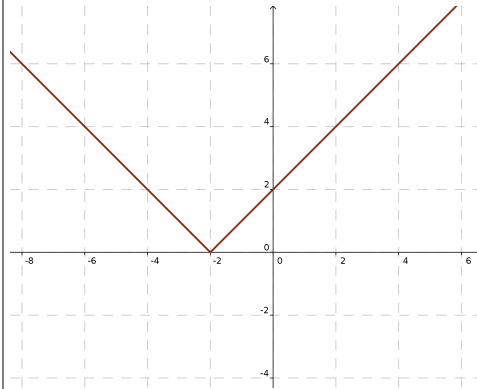
a)  $4-x \geq 0 ; 4 \geq x \Leftrightarrow x \leq 4$   

$$y = \begin{cases} 4-x & \text{si } x \leq 4 \\ -(4-x) & \text{si } x > 4 \end{cases}$$



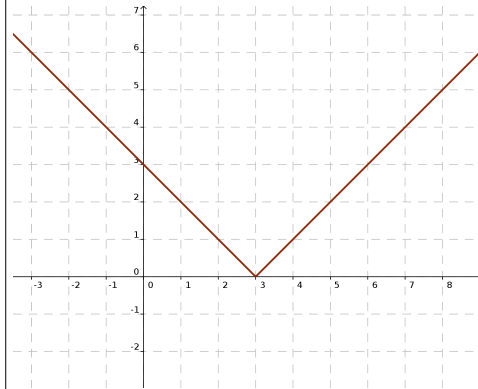
b)  $x+2 \geq 0 ; x \geq -2$   

$$y = \begin{cases} -(x+2) & \text{si } x < -2 \\ x+2 & \text{si } x \geq -2 \end{cases}$$



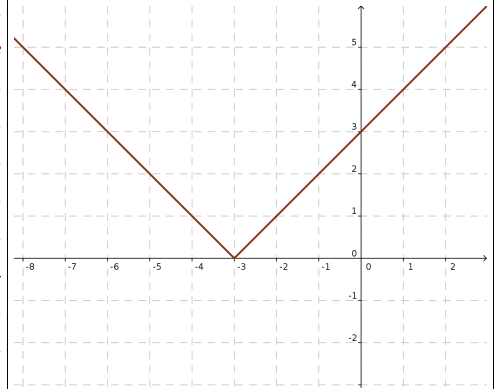
c)  $x-3 \geq 0 ; x \geq 3$   

$$y = \begin{cases} x-3 & \text{si } x \geq 3 \\ -(x-3) & \text{si } x < 3 \end{cases}$$



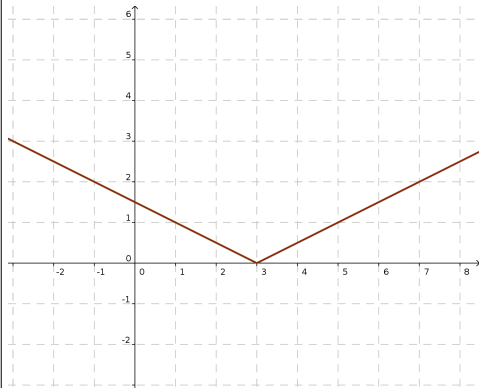
d)  $-x-3 \geq 0 ; -3 \geq x ; x \leq -3$   

$$y = \begin{cases} -x-3 & \text{si } x \leq -3 \\ x+3 & \text{si } x > -3 \end{cases}$$



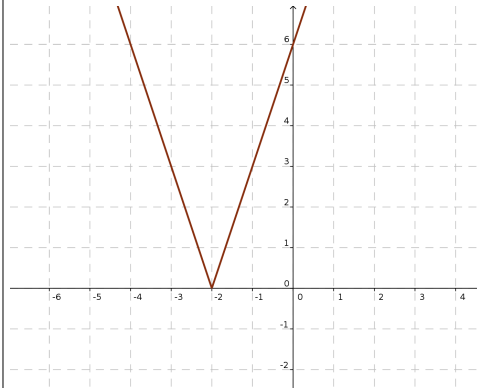
a)  $(x-3)/2 \geq 0 ; x-3 \geq 0 ; x \geq 3$   

$$y = \begin{cases} (x-3)/2 & \text{si } x \geq 3 \\ (3-x)/2 & \text{si } x < 3 \end{cases}$$



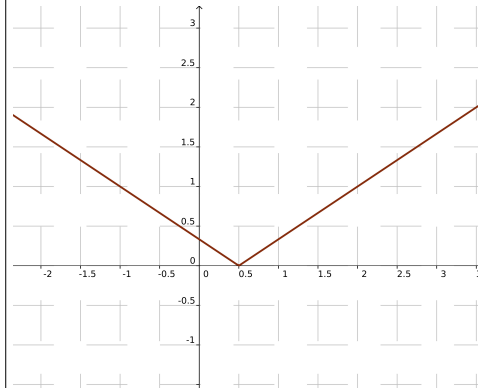
b)  $3x+6 \geq 0 ; 3x \geq -6 ; x \geq -2$   

$$y = \begin{cases} 3x+6 & \text{si } x \geq -2 \\ -(3x+6) & \text{si } x < -2 \end{cases}$$



c)  $(2x-1)/3 \geq 0 ; 2x-1 \geq 0 ; x \geq 1/2$   

$$y = \begin{cases} (2x-1)/3 & \text{si } x \geq 1/2 \\ (1-2x)/3 & \text{si } x < 1/2 \end{cases}$$



d)  $-x-1 \geq 0 ; -1 \geq x ; x \leq -1$   

$$y = \begin{cases} -x-1 & \text{si } x \leq -1 \\ x+1 & \text{si } x > -1 \end{cases}$$

